

Interagency Partnership ECCFPD Regional Training Facility



March 13, 2019

Presented By:

Fire Chief Brian Helmick

General Manager Chad Davisson (ISD)



Tonight's Goals



- 1. Discuss Order of Events***
- 2. Introduce the Project's Purpose & Scope***
- 3. Introduce Ironhouse Sanitary District (ISD)***
- 4. Define ECCFPD & ISD Benefits***
- 5. Discuss Next Steps***
- 6. Q&A***
- 7. Seek Direction***



Order of Events



2018

- ECCFPD developed Strategic Planning Document.
- ECCFPD Board identified the need for a training facility.
- ECCFPD Fire Chief and ISD General Manager had series of meetings to discuss potential for mutually beneficial site for regional facility.
- Both agencies conducted cursory feasibility analysis.

2019

- Initial feasibility assessment determined that shared project has mutual benefits.
- **3/13/2019** – ECCFPD proposes concept to Board for discussion and consideration.
- **3/19/2019** – Assuming support from ECCFPD Board, ISD proposes concept to their Board for discussion and consideration.



Project Purpose & Scope



- Objective:
 - Develop ECCFPD Training, Storage, Fleet Maintenance Facilities on ISD mainland property
- Concept:
 - Dedicated ECCFPD Training Grounds / Regional Training Site
- Rationale
 - Centrally located
 - Facilitate a stronger ECCFPD presence in Oakley
 - Best use of public owned land to support community needs.
 - Shared benefit to ECCFPD & ISD by addressing agency needs

Ironhouse Sanitary District

- Provides Wastewater Collection and Treatment Services to Oakley and Bethel Island
- Current staffing 27 employees
- Ironhouse provides services in four areas of Operation:
 - *Sewer Collection System*
 - *Water Recycling Facility*
 - *Recycled Water Distribution*
 - *Jersey Island Cattle and Farming*



LEGEND: DESCRIPTION:
——— 150 SERVICE AREA BOUNDARY (36.6 SQUARE MILES)

160

4

Jersey Island

Bethel Island

Bethel



Main Street

City Office

Oakley

Knightsen

Wilbur Avenue

East 14th Street



Agency Benefits



ECCFPD

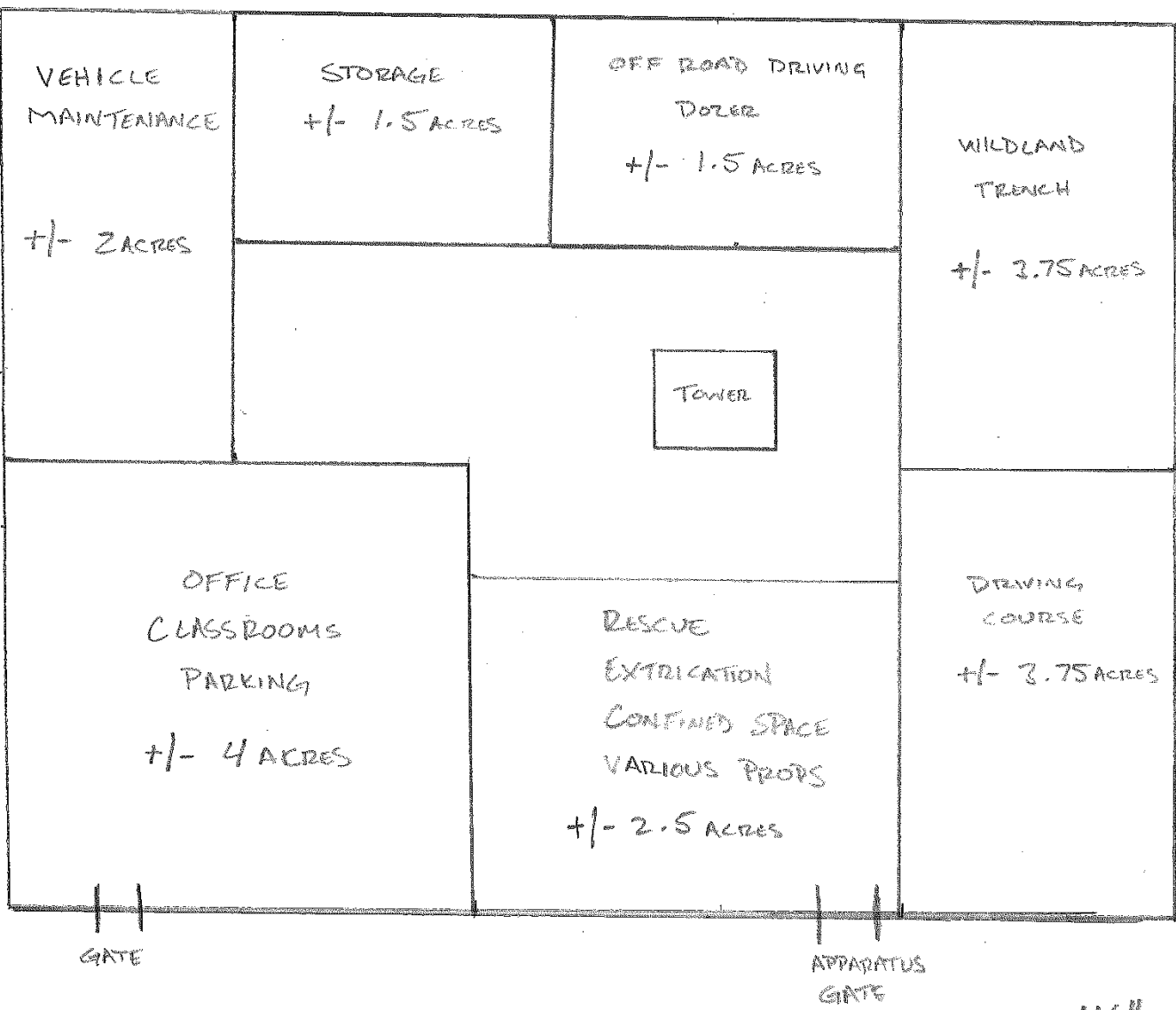
ISD

- Supports the recently adopted Strategic Plan's Implementation Action Plan
- Regional training facilities that will support annual training mandates
- Fleet facilities storage & shop
- Historical facility/storage
- District general storage
- Optimal site within service area

- Beneficial use of ISD mainland property
- Access to ECCFPD training facilities
- Access to ECCFPD maintenance facilities



EXISTING
ISD
FACILITY



GATE

APPARATUS
GATE

TOTAL PLOT SIZE = 20 ACRES

1/2" SQ = 1 SQ ACRE

PLOT PLAN #1



Next Steps



1. Provide direction to staff for continuing analysis or direct staff to pursue different alternatives.
2. Complete comprehensive feasibility study:
 - *Legal aspects/framework of partnership*
 - *Economic analysis*
 - *Environmental impacts*
3. Present findings of feasibility study to Board for consideration and direction.
4. Direct staff to develop terms of a partnership agreement.
5. Formally approve partnership agreement.



Questions & Direction



Provide direction to staff for continuing analysis or direct staff to pursue different alternatives.

Thank You



Order of Events



2018

- ECCFPD developed Strategic Planning Document.
- ECCFPD Board identified the need for a training facility.
- ECCFPD Fire Chief and ISD General Manager had series of meetings to discuss potential for mutually beneficial site for regional facility.
- Both agencies conducted cursory feasibility analysis.

2019

- Initial feasibility assessment determined that shared project has mutual benefits.
- **3/13/2019** – ECCFPD proposes concept to Board for discussion and consideration.
- **3/19/2019** – Assuming support from ECCFPD Board, ISD proposes concept to their Board for discussion and consideration.